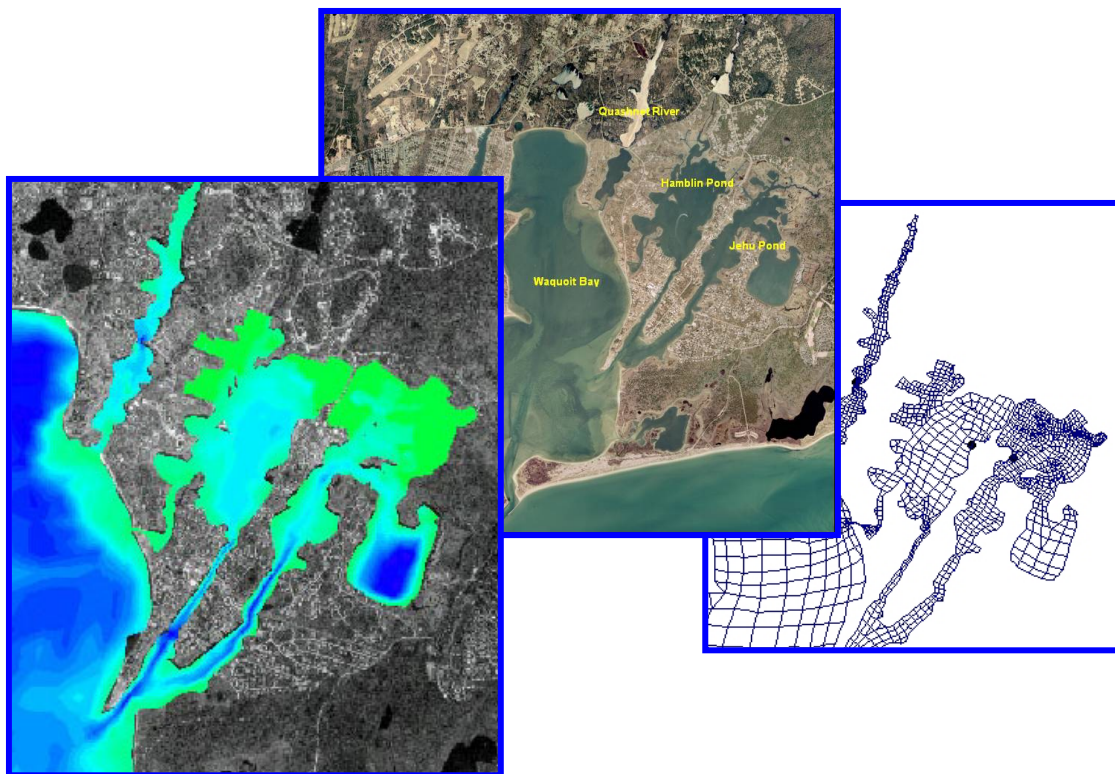


# Massachusetts Estuaries Project

## Linked Watershed-Embayment Model to Determine Critical Nitrogen Loading Thresholds for the Quashnet River, Hamblin Pond, and Jehu Pond, in the Waquoit Bay System of the Towns of Mashpee and Falmouth, MA



University of Massachusetts Dartmouth  
School of Marine Science and Technology



Massachusetts Department of  
Environmental Protection

# Massachusetts Estuaries Project

## LINKED WATERSHED-EMBAYMENT MODEL TO DETERMINE CRITICAL NITROGEN LOADING THRESHOLDS FOR THE QUASHNET RIVER, HAMBLIN POND, AND JEHU POND, IN THE WAQUOIT BAY SYSTEM OF THE TOWNS OF MASHPEE AND FALMOUTH, MA

FINAL REPORT – JANUARY 2005



Brian Howes  
Roland Samimy  
David Schlezinger



Sean Kelley  
John Ramsey  
Trey Ruthven



Ed Eichner

Contributors:

### ***US Geological Survey***

Don Walters and John Masterson

### ***Applied Coastal Research and Engineering, Inc.***

Elizabeth Hunt

### ***Massachusetts Department of Environmental Protection***

Charles Costello and Brian Dudley (DEP project manager)

### ***SMAST Coastal Systems Program***

George Hampson, Sara Sampieri, David White, and Paul Henderson

### ***Cape Cod Commission***

Brian DuPont

## ACKNOWLEDGMENTS

The Massachusetts Estuaries Project Technical Team would like to acknowledge the contributions of the many individuals who have worked tirelessly for the restoration and protection of the critical coastal resources of the eastern Waquoit Bay estuaries. Without these stewards and their efforts, this project would not have been possible.

First and foremost is the significant time and effort in data collection and discussion spent by members of the Mashpee Water Quality Monitoring Program and SMAST “volunteers”. These individuals gave of their time to collect nutrient samples from these systems and without these data, the present analysis would not have been possible. In addition, data collected by WBNERR through the volunteers of the BayWatcher Program and the SWMP Program were graciously made available and were very useful to this analysis. Freshwater Pond data was provided by the pond surveys conducted by the CCC/SMAST Cape Cod pond monitoring project and PALS program. Similarly, many in the Town of Mashpee worked diligently on this effort, specifically the Mashpee Waterways Commission, Mashpee Shellfish Department, Mashpee Watershed Nutrient Management Committee, Mashpee Sewer Commission, and Mashpee Board of Selectman. Early on, the Mashpee Sewer Commission recognized and supported the present quantitative analysis towards the development of its Comprehensive Nutrient Management Plan to protect/restore Mashpee’s coastal resources. The technical team would like to specifically acknowledge the efforts of both Jim Hanks, for helping to coordinate the various Mashpee efforts including nutrient sampling, and Tom Fudala, for his efforts on multiple fronts, but particularly as relates to land-use analysis and coordinating the Town’s nitrogen management activities with the MEP.

In addition to local contributions, technical, policy and regulatory support has been freely and graciously provided by Tom Camberari and Margo Fenn of the Cape Cod Commission; David Webster, Bruce Rosinoff, Art Clark and Nora Conlon of the USEPA; and our MADEP colleagues: Andrew Gottlieb, Arleen O’Donnell, Art Screpetis, Rick Dunn, Steve Halterman, Russ Isaac, Alan Slater, Glenn Haas, Sharon Pelosi, and Ron Lyberger. We are also thankful for the long hours in the field and laboratory spent by the many interns and students within the Coastal Systems Program at SMAST-UMD.

Support for this project was provided by the Town of Mashpee, Barnstable County, University of Massachusetts-Dartmouth, MADEP, and the USEPA.

## SUGGESTED CITATION

Howes B., S.W. Kelley, J.S. Ramsey, R. Samimy, D. Schlezinger, T. Ruthven, E. Eichner (2004). Linked Watershed-Embayment Model to Determine Critical Nitrogen Loading Thresholds for the Quashnet River, Hamblin Pond, and Jehu Pond, in the Waquoit Bay System in the Towns of Mashpee and Falmouth, Massachusetts. Massachusetts Estuaries Project, Massachusetts Department of Environmental Protection. Boston, MA.

**TABLE OF CONTENTS**

**I. INTRODUCTION ..... 1**

    I.1 THE MASSACHUSETTS ESTUARIES PROJECT APPROACH ..... 4

    I.2 SITE DESCRIPTION ..... 7

    I.3 NITROGEN LOADING ..... 10

    I.4 WATER QUALITY MODELING ..... 12

    I.5 REPORT DESCRIPTION ..... 12

**II. PREVIOUS STUDIES RELATED TO NITROGEN MANAGEMENT ..... 14**

**III. DELINEATION OF WATERSHEDS ..... 18**

    III.1 BACKGROUND ..... 18

    III.2 MODEL DESCRIPTION ..... 19

    III.3 MASHPEE CONTRIBUTORY AREAS ..... 20

**IV. WATERSHED NITROGEN LOADING TO EMBAYMENT: LAND USE, STREAM  
    INPUTS, SEDIMENT NITROGEN FLUX AND RECYCLING ..... 26**

    IV.1 WATERSHED LAND USE BASED NITROGEN LOADING ANALYSIS ..... 26

        IV.1.1 Land Use and Database Preparation ..... 28

        IV.1.2 Nitrogen Loading Input Factors ..... 31

        IV.1.3 Calculating Nitrogen Loads ..... 35

            IV.1.3.1 J Well Correction to Nitrogen Loads ..... 36

    IV.2 ATTENUATION OF NITROGEN IN SURFACE WATER TRANSPORT ..... 43

        IV.2.1 Background and Purpose ..... 43

        IV.2.2 Surface Water Discharge and Attenuation of Watershed Nitrogen:  
            Quashnet River to Quashnet River Estuary ..... 46

    IV.3 BENTHIC REGENERATION OF NITROGEN IN BOTTOM SEDIMENTS ..... 52

        IV.3.1 Sediment-Watercolumn Exchange of Nitrogen ..... 52

        IV.3.2 Method for determining sediment-watercolumn nitrogen exchange ..... 53

        IV.3.3 Rates of Summer Nitrogen Regeneration from Sediments ..... 56

**V. HYDRODYNAMIC MODELING ..... 59**

    V.1. INTRODUCTION ..... 59

    V.2. GEOMORPHIC AND ANTHROPOGENIC EFFECTS TO THE SYSTEM ..... 61

    V.3 FIELD DATA COLLECTION AND ANALYSIS ..... 65

        V.3.1 Bathymetry ..... 66

        V.3.2 Water Elevation Measurements and Analysis ..... 67

    V.4. HYDRODYNAMIC MODELING ..... 73

        V.4.1 Model Theory ..... 73

        V.4.2 Model Setup ..... 74

            V.4.2.1 Grid Generation ..... 74

            V.4.2.2 Boundary Condition Specification ..... 75

            V.4.2.3 Calibration ..... 76

            V.4.2.4 Model Circulation Characteristics ..... 83

    V.5. FLUSHING CHARACTERISTICS ..... 85

**VI. WATER QUALITY MODELING ..... 89**

    VI.1 DATA SOURCES FOR THE MODEL ..... 89

Table of Contents (Continued)

VI.1.1 Hydrodynamics and Tidal Flushing in the Embayments .....89

VI.1.2 Nitrogen Loading to the Embayments.....89

VI.1.3 Measured Nitrogen Concentrations in the Embayments.....89

VI.2 MODEL DESCRIPTION AND APPLICATION.....91

VI.2.1 Model Formulation .....92

VI.2.2 Water Quality Model Setup .....93

VI.2.3 Boundary Condition Specification .....93

VI.2.4 Model Calibration .....94

VI.2.5 Model Salinity Verification .....95

VI.2.6 Build-Out and No Anthropogenic Load Scenarios ..... 102

**VII. ASSESSMENT OF EMBAYMENT NUTRIENT RELATED ECOLOGICAL HEALTH ..... 112**

VII.1 OVERVIEW OF BIOLOGICAL HEALTH INDICATORS ..... 112

VII.2 BOTTOM WATER DISSOLVED OXYGEN ..... 113

VII.3 EELGRASS DISTRIBUTION - TEMPORAL ANALYSIS ..... 121

VII.4 BENTHIC INFAUNA ANALYSIS ..... 125

**VIII. CRITICAL NUTRIENT THRESHOLD DETERMINATION AND DEVELOPMENT OF  
WATER QUALITY TARGETS ..... 128**

VIII.1 ASSESSMENT OF NITROGEN RELATED HABITAT QUALITY ..... 128

VIII.2 THRESHOLD NITROGEN CONCENTRATIONS..... 131

VIII.3 DEVELOPMENT OF TARGET NITROGEN LOADS..... 132

**IX. REFERENCES ..... 145**

**LIST OF FIGURES**

Figure	Page
Figure I-1. Major components of the Waquoit Bay Estuarine System. The study region for the present Massachusetts Estuaries Project analysis is the 3 major sub-embayments within the eastern portion of the Waquoit Bay System (Quashnet River, Hamblin Pond/Little River, Jehu Pond/Great River). Tidal waters from Nantucket Sound enter the main Bay through a single inlet in the barrier beach and a smaller inlet to the Eel Pond sub-embayment. Freshwaters enter the estuary primarily through two major surface water discharges (Childs River to Eel Pond and Quashnet River), several smaller streams (e.g. Red Brook), and direct groundwater discharge.....	2
Figure I-2. Massachusetts Estuaries Project Critical Nutrient Threshold Analytical Approach .....	8
Figure III-1. Watershed and sub-watershed delineations for the Eastern Waquoit Bay estuary system. Approximate ten year time-of-travel delineations were produced for quality assurance purposes and are designated with a “10” in the figure legend (left). Sub-watersheds to embayments were selected based upon the functional estuarine sub-units in the water quality model (see section VI). .....	21
Figure III-2. Comparison of previous and current Eastern Waquoit Bay watershed and subwatershed delineations. ....	22
Figure IV-1. Land-use coverage in the Eastern Waquoit Bay watershed. Watershed data encompasses portions of the Towns of Mashpee, Falmouth, and Sandwich, MA. ....	29
Figure IV-2. Distribution of land-uses within the major subwatersheds to the Quashnet River, Hamblin Pond/Little River, Jehu Pond/Great River estuaries and the entire watershed to the eastern portion of the Waquoit Bay System.....	30
Figure IV-3. Parcels, Parcelized Watersheds, and Wastewater Treatment Facilities within the watershed to the eastern portion of the Waquoit Bay System. ....	32
Figure IV-4. (a-c). Land use-specific unattenuated nitrogen load (by percent) to the Eastern Waquoit Bay system, Quashnet River, and Hamblin Pond/Red Brook. ....	38
Figure IV-4. (d-e). Land use-specific unattenuated nitrogen load (by percent) to Jehu Pond/Great River and Sage Lot/Flat Pond. ....	39
Figure IV-5. Distribution of present parcels which are potentially developable within the Eastern Waquoit Bay watershed. ....	42
Figure IV-6. Location of Stream gauge (yellow triangle) and benthic coring locations (blue hexagons) in the Quashnet River sub-embayment to the Waquoit Bay system. ....	45
Figure IV-7. Comparison of historical Quashnet River flows as determined by the US Geological Survey (1989 – 2002) and the annualized flow developed by the MEP (2003) all relative to annual rainfall from meteorological stations in Falmouth and Hyannis, MA. ....	47

Figure	Page
Figure IV-8. Quashnet River annual discharge developed from a stream gauge maintained above the tidal reach of the lower Mashpee River estuarine waters. Nutrient samples were collected weekly and analyzed for inorganic and organic nitrogen species. These data were used to determine both annual flow and total nitrogen transport for determining nitrogen attenuation (see Table IV-7).....	49
Figure IV-9. Nitrate + Nitrite (Nox) concentration and Quashnet River annual discharge developed from a stream gauge maintained in the outflow from John's Pond discharging to tidally influenced portion of Quashnet River. Nutrient samples were collected approximately weekly and analyzed for inorganic and organic nitrogen species. These data were used to determine both annual flow and total nitrogen transport for determining nitrogen attenuation (see Table IV-7).....	50
Figure IV-10. Quashnet River, Hamblin Pond/Little River and Jehu Pond/Great River estuaries to the Waquoit Bay System, locations (red triangles) of sediment sample collection for determination of nitrogen regeneration rates. Numbers are for reference to Table IV-9.....	54
Figure IV-11. Conceptual diagram showing the seasonal variation in sediment N flux, with maximum positive flux (sediment output) occurring in the summer months, and maximum negative flux (sediment up-take) during the winter months.....	57
Figure V-1. Aerial photograph of the Waquoit Bay system. ....	60
Figure V-2. Inlet changes within the Waquoit Bay system between the early 1900's and 1991 (from Aubrey et al., 1993).....	63
Figure V-3. Photograph of the third inlet through the western portion of Washburn Island. The photograph was taken within a week of Hurricane Bob in 1991 (from Waquoit Bay National Estuarine Research Reserve website). ....	64
Figure V-4. Results of a shoreline change analysis utilizing the NOAA 1938 shoreline and a differential GPS shoreline measured in April/May 2004. Although large-scale retreat is limited to the western half of Washburn Island, other nearby areas of the Falmouth and Mashpee shoreline contain "hot spots" where erosion rates exceed 1 ft/year. ....	65
Figure V-5. Waquoit Bay system with tide gage locations labeled as W1-W7. ....	66
Figure V-6. Depth contour plots of the numerical grid for the Waquoit Bay region at 0.5-foot contour intervals relative to NGVD29. ....	67
Figure V-7. Tidal elevation observations for offshore Menauhant Beach (location W1), Waquoit Bay (location W2), Eel Pond (location W3), Childs River (location W4).....	69
Figure V-8. Tidal elevation observations for Moonakis/Quashnet River (location W5), Hamblin Pond (location W6), and Great River (location W7). ....	70
Figure V-9. Comparison of water surface elevation observations for Nantucket Sound (offshore), and six locations within the Waquoit Bay system. Damping effects are seen as a decrease in the tidal amplitude, as well as a lag in the time of high and low tides from Nantucket Sound. ....	72
Figure V-10. Plot of hydrodynamic model grid mesh for the Waquoit Bay system. ....	75
Figure V-11. Hydrodynamic model grid material properties utilized by the RMA-2 model. Color patterns designate the different model material types used to vary model calibration parameters and compute flushing rates. ....	78

Figure	Page
Figure V-12. Comparison of model output and measured tides for the TDR location in Eel Pond.....	80
Figure V-13. Comparison of model output and measured tides for the TDR location in Childs River.....	80
Figure V-14. Comparison of model output and measured tides for the TDR location in Waquoit Bay.....	81
Figure V-15. Comparison of model output and measured tides for the TDR location in Moonakis/Quashnet River.....	81
Figure V-16. Comparison of model output and measured tides for the TDR location in Hamblin Pond.....	82
Figure V-17. Comparison of model output and measured tides for the TDR location in Great River.....	82
Figure V-18. Example of hydrodynamic model output for a single time step where maximum flood velocities occur for this tide cycle. Color contours indicate velocity magnitude, and vectors indicate the direction of flow.....	84
Figure V-19. Time variation of computed flow rates for six transects in the Waquoit Bay system. Model period shown corresponds to spring tide conditions, where the tide range is the largest, and resulting flow rates are correspondingly large compared to neap tide conditions. Plotted time period represents three tide cycles (12.42 h cycle). Positive flow indicated flooding tide, while negative flow indicates ebbing tide.....	85
Figure V-20. Basins used to compute residence times for the Waquoit Bay system.....	88
Figure VI-1. Estuarine water quality monitoring station locations in Waquoit Bay. Station labels correspond to those provided in Table VI-1.....	91
Figure VI-2. Comparison of measured total nitrogen concentrations and calibrated model output at stations in the Hamblin Pond/Jehu Pond system of Waquoit Bay. Stations labels correspond with those provided in Table VI-1. Model output is presented as a range of values from minimum to maximum values computed during the simulation period (triangle markers), along with the average computed concentration for the same period (square markers). Measured data are presented as the total yearly mean at each station (circle markers), together with ranges that indicate $\pm$ one standard deviation of the annual data means.....	96
Figure VI-3. Comparison of measured total nitrogen concentrations and calibrated model output at stations in the Quashnet River system of Waquoit Bay. Stations labels correspond with those provided in Table VI-1. Model output is presented as a range of values from minimum to maximum values computed during the simulation period (triangle markers), along with the average computed concentration for the same period (square markers). Measured data are presented as the total yearly mean at each station (circle markers), together with ranges that indicate $\pm$ one standard deviation of the annual data means.....	97
Figure VI-4. Contour plot of average total nitrogen concentrations from results of the present conditions loading scenario, for the Hamblin Pond and Jehu Pond sub-embayments of Waquoit Bay.....	98
Figure VI-5. Contour plot of average total nitrogen concentrations from results of the present conditions loading scenario, for Quashnet River sub-embayment system of Waquoit Bay.....	99

Figure	Page
Figure VI-6. Comparison of measured salinity and calibrated model output at stations in the Hamblin Pond/Jehu Pond system. Stations labels correspond with those provided in Table VI-1. Model output is presented as a range of values from minimum to maximum values computed during the simulation period (triangle markers), along with the average computed salinity for the same period (square markers). Measured data are presented as the total yearly mean at each station (circle markers).....	100
Figure VI-7. Comparison of measured salinity and calibrated model output at stations in the Quashnet River system. Stations labels correspond with those provided in Table VI-1. Model output is presented as a range of values from minimum to maximum values computed during the simulation period (triangle markers), along with the average computed salinity for the same period (square markers). Measured data are presented as the total yearly mean at each station (circle markers).....	100
Figure VI-8. Contour Plot of modeled salinity (ppt) in the Hamlin Pond and Jehu Pond sub-embayment system of the Waquoit Bay estuarine system.....	101
Figure VI-9. Contour Plot of modeled salinity (ppt) in the Hamlin Quashnet River sub-embayment system of Waquoit Bay.....	102
Figure VI-10. Contour Plot of modeled total nitrogen concentrations (mg/L) in the Hamblin Pond/Jehu Pond embayment system of Waquoit Bay, for projected build out loading conditions. ....	106
Figure VI-11. Contour Plot of modeled total nitrogen concentrations (mg/L) in the Quashnet River embayment system of Waquoit Bay, for projected build out loading conditions.....	107
Figure VI-12. Contour Plot of modeled total nitrogen concentrations (mg/L) in the Hamblin Pond/Jehu Pond sub-system of Waquoit Bay, for no anthropogenic loading conditions.....	110
Figure VI-13. Contour Plot of modeled total nitrogen concentrations (mg/L) in the Quashnet River embayment system of Waquoit Bay, for no anthropogenic loading conditions.....	111
Figure VII-1. Average watercolumn respiration rates from water collected throughout the Popponesset Bay System (Schlezinger and Howes, unpublished data). Rates vary ~7 fold from winter to summer as a result of variations in temperature and organic matter availability.....	114
Figure VII-2. Aerial Photograph of the Waquoit Bay system in Falmouth/Mashpee showing locations of Dissolved Oxygen mooring deployments conducted in summer 2002.....	115
Figure VII-3. Bottom water record of dissolved oxygen (top panel) in the Quashnet River Estuary (lower basin), summer 2002. Calibration samples represented as red dots. ....	116
Figure VII-4. Bottom water record of dissolved oxygen (bottom panel) in Hamblin Pond, summer 2002. Calibration samples represented as red dots.....	116
Figure VII-5. Bottom water record of chlorophyll-a (bottom panel) in the Quashnet River Estuary (lower basin), summer 2002. Calibration samples represented as red dots .....	118
Figure VII-6. Distribution of chlorophyll a pigments within the Quashnet River Estuary from grab sampling by the Mashpee Water Quality Monitoring Program-Coastal Systems Program (SMAST) 2001 - 2003.....	121

Figure	Page
Figure VII-7. Eelgrass distribution (1987, 1988, 1989 and 1992) within the Waquoit Bay System determined with field observations (Short and Burdick 1996). Rate of loss of eelgrass is rapid in Jehu and Hamblin Ponds during this interval and continued over the next decade (Figure VII-8). Note the “hole in the Jehu Pond coverage is in the deep basin.....	122
Figure VII-8. Eelgrass bed distribution within the Hamblin and Jehu Pond sub-embayment systems. The 1951 coverage is depicted by the yellow outline inside of which circumscribes the eelgrass beds. The blue (1995) and purple (2001) areas were mapped by DEP. All data were provided by the DEP Eelgrass Mapping Program.....	123
Figure VII-9. Aerial photograph of the eastern embayments within the Waquoit Bay System showing location of benthic sampling stations (red symbols) for infaunal community assessments.....	126
Figure VIII-1. Contour plot of modeled total nitrogen concentrations (mg/L) in the Jehu Pond and Hamblin Pond Estuaries within the Waquoit Bay System, for <b>Scenario A</b> loading conditions (100% septic removal, with present Waquoit Bay boundary condition). ....	135
Figure VIII-2. Same results as for Figure VIII-1, but shown with finer contour increments for emphasis. Contour plot of modeled total nitrogen concentrations (mg/L) in the Jehu Pond and Hamblin Pond Estuaries within the Waquoit Bay System, for <b>Scenario A</b> loading conditions (100% septic removal, with present Waquoit Bay boundary condition). ....	136
Figure VIII-3. Contour plot of modeled total nitrogen concentrations (mg/L) in the Jehu Pond and Hamblin Pond Estuaries within the Waquoit Bay System, for <b>Scenario B</b> loading conditions (75% septic removal in Hamblin Pond, 100% septic removal in Jehu Pond, with 0.350 mg/L Waquoit Bay boundary condition). ....	137
Figure VIII-4. Same results as for Figure VIII-3, but shown with finer contour increments for emphasis. Contour plot of modeled total nitrogen concentrations (mg/L) in the Jehu Pond and Hamblin Pond Estuaries within the Waquoit Bay System, for <b>Scenario B</b> loading conditions (75% septic removal in Hamblin Pond, 100% septic removal in Jehu Pond, with 0.350 mg/L Waquoit Bay boundary condition). ....	138
Figure VIII-5. Contour plot of modeled total nitrogen concentrations (mg/L) in the Quashnet River Estuary within the Waquoit Bay System, for <b>Scenario A</b> loading conditions (100% septic removal, with present Waquoit Bay boundary condition). ....	141
Figure VIII-6. Same results as for Figure VIII-5, but shown with finer contour increments for emphasis. Contour plot of modeled total nitrogen concentrations (mg/L) in the Quashnet River Estuary within the Waquoit Bay System, for <b>Scenario A</b> loading conditions (100% septic removal, with present Waquoit Bay boundary condition). ....	142
Figure VIII-7. Contour plot of modeled total nitrogen concentrations (mg/L) in the Quashnet River Estuary within the Waquoit Bay System, for <b>Scenario B</b> loading conditions (67% septic removal, with 0.350 mg/L Waquoit Bay boundary condition). ....	143

Figure	Page
Figure VIII-8. Same results as for Figure VIII-7, but shown with finer contour increments for emphasis. Contour plot of modeled total nitrogen concentrations (mg/L) in the Quashnet River Estuary within the Waquoit Bay System, for <b>Scenario B</b> loading conditions (67% septic removal, with 0.350 mg/L Waquoit Bay boundary condition). .....	144

**LIST OF TABLES**

Table	Page
Table III-1. Daily groundwater discharge to each of the sub-embayments in the East Waquoit Bay system, as determined from the USGS groundwater model.....	23
Table III-2. Percent difference in delineated embayment watershed areas between old and newly revised delineations.....	25
Table IV-1. Percentage of nitrogen loads in less than 10 time of travel subwatersheds to Eastern Waquoit Bay.....	27
Table IV-2. Private Wastewater Treatment Facilities in the Eastern Waquoit Bay Watershed.....	28
Table IV-3. Water Use in Popponesset Bay Watershed.....	33
Table IV-4. Primary Nitrogen Loading Factors used in Eastern Waquoit Bay MEP analysis. General factors are from the MEP modeling evaluation (Howes & Ramsey 2001). Site-specific factors are derived from Mashpee, Sandwich, and Barnstable data. *Data from MEP lawn study in Falmouth, Mashpee & Barnstable 2001. ....	35
Table IV-5. Eastern Waquoit Bay System Nitrogen Loads. Build-out is based on current zoning and represents additional un-attenuated N expected in the future. ....	37
Table IV-6. Nitrogen attenuation by Freshwater Ponds in the Eastern Waquoit Bay watershed based upon late summer 2001 and 2002 Cape Cod Pond and Lakes Stewardship (PALS) program sampling and Massachusetts Military Reservation (MMR)-associated monitoring. These data were collected to provide a site specific check on nitrogen attenuation by these systems. The Eastern Waquoit Bay analysis using the MEP Linked N Model uses a value of 50% for the non-stream discharge systems.....	41
Table IV-7. Comparison of water flow and nitrogen discharges from the Quashnet River to the lower estuarine reach of the Quashnet River. The “Stream” data is from the MEP stream gauging effort. Watershed data is based on the MEP watershed modeling effort by the USGS. ....	48
Table IV-8. Summary of Flow and Nutrient loads from both the Quashnet River discharging to tidally influenced Quashnet River estuarine reach.....	51
Table IV-9. Rates of net nitrogen return from sediments to the overlying waters of eastern Waquoit Bay sub-embayments (Quashnet River, Hamblin Pond/Little River, Jehu Pond/Great River). These values are combined with the basin areas to determine total nitrogen mass in the water quality model (see Chapter VI). Measurements represent July/August rates, standard deviation is based upon the linear regression of six samples per mean. ....	55
Table V-1. Tidal Constituents, Waquoit Bay System January-February 2002.....	71
Table V-2. M <sub>2</sub> Tidal Attenuation, Waquoit Bay, January-February 2002 (Delay in minutes relative to Nantucket Sound).....	71
Table V-3. Percentages of Tidal versus Non-Tidal Energy, Waquoit, 2002.....	73
Table V-4. Manning's Roughness coefficients used in simulations of modeled embayments. These embayment delineations correspond to the material type areas shown in Figure V-8.....	77
Table V-5. Tidal constituents for measured water level data and calibrated model output for northern embayments. ....	83

Table	Page
Table V-6. Embayment mean volumes and average tidal prism during simulation period. ....	87
Table V-7. Computed System and Local residence times for embayments in the Waquoit Bay system. ....	87
Table VI-1. Measured and modeled Nitrogen concentrations for the Waquoit Bay system, at stations shown in Figure VI-2, and used in the model calibration plots. All concentrations are given in mg/L N. "Data mean" values are calculated as the average of all total nitrogen data. ....	90
Table VI-2. Sub-embayment and surface water loads used for total nitrogen modeling of the Hamblin Pond/Jehu Pond system, with total watershed N loads, atmospheric N loads, and benthic flux. These load represent <b>present loading conditions</b> for the listed sub-embayments. ....	94
Table VI-3. Sub-embayment and surface water loads used for total nitrogen modeling of the Quashnet River system, with total watershed N loads, atmospheric N loads, and benthic flux. These load represent <b>present loading conditions</b> for the listed sub-embayments. ....	94
Table VI-4. Values of longitudinal dispersion coefficient, E, used in calibrated RMA4 model runs of salinity and nitrogen concentration for the Hamblin Pond/Jehu Pond and Quashnet River sub-systems of Waquoit Bay. ....	96
Table VI-5. Comparison of sub-embayment watershed loads used for modeling of present, build out, and no-anthropogenic ("no-load") loading scenarios of the Hamblin Pond/Jehu Pond system. These loads do not include direct atmospheric deposition (onto the sub-embayment surface) or benthic flux loading terms. ....	103
Table VI-6. Comparison of sub-embayment watershed loads used for modeling of present, build out, and no-anthropogenic ("no-load") loading scenarios of the Quashnet River system. These loads do not include direct atmospheric deposition (onto the sub-embayment surface) or benthic flux loading terms). ....	103
Table VI-7. Buildout sub-embayment and surface water loads used for total nitrogen modeling of the Hamblin Pond/Jehu Pond system, with total watershed N loads, atmospheric N loads, and benthic flux. ....	104
Table VI-8. Buildout sub-embayment and surface water loads used for total nitrogen modeling of the Quashnet River system, with total watershed N loads, atmospheric N loads, and benthic flux. ....	105
Table VI-9. Comparison of model average total N concentrations from present loading and the buildout scenario, with percent change, for the Hamblin Pond/Jehu Pond system. Loads are based on atmospheric deposition and a scaled N benthic flux (scaled from present conditions). ....	105
Table VI-10. Comparison of model average total N concentrations from present loading and the buildout scenario, with percent change, for the Quashnet River system. Loads are based on atmospheric deposition and a scaled N benthic flux (scaled from present conditions). ....	105
Table VI-11. No-anthropogenic-load scenario sub-embayment and surface water loads used for total nitrogen modeling of the Hamblin Pond/Jehu Pond system, with total watershed N loads, atmospheric N loads, and benthic flux. A Waquoit Bay boundary N concentration of 0.30 mg/L was used for this "forested watershed" scenario. ....	108

Table	Page
Table VI-12. No-anthropogenic-load scenario sub-embayment and surface water loads used for total nitrogen modeling of the Quashnet River system, with total watershed N loads, atmospheric N loads, and benthic flux. A Waquoit Bay boundary N concentration of 0.30 mg/L was used for this “forested watershed” scenario. ....	108
Table VI-13. Comparison of model average total N concentrations from present loading and the no anthropogenic load (“no load”) scenario, with percent change, for the Hamblin Pond/Jehu Pond system. Loads are based on atmospheric deposition and a scaled N benthic flux (scaled from present conditions). A Waquoit Bay boundary N concentration of 0.30 mg/L was used for this “forested watershed” scenario. ....	109
Table VI-14. Comparison of model average total N concentrations from present loading and the no anthropogenic load (“no load”) scenario, with percent change, for the Quashnet River system. Loads are based on atmospheric deposition and a scaled N benthic flux (scaled from present conditions). A Waquoit Bay boundary N concentration of 0.30 mg/L was used for this “forested watershed” scenario. ....	109
Table VII-1. Percent of time during deployment of <i>in situ</i> sensors or of traditional grab sampling events that bottom water oxygen levels were below various benchmark oxygen levels. ....	117
Table VII-2. Levels of chlorophyll a pigments within the Town of Mashpee sub-embayments to Waquoit Bay. All data were collected by grab samples from June-September. Data collected by the Waquoit Bay BayWatcher Program (WBNERR) and by Popponeset Bay Water Quality Monitoring Program and Coastal Systems Program, SMAST (SMAST). Geometric averages were used to estimate “average” conditions, given the periodic phytoplankton blooms. WBNERR data (June-September) is from the BayWatcher samplings garnered from NERR Web site. ....	119
Table VII-3. Frequency (number of events during deployment) and duration (total number of days over deployment) of chlorophyll a levels above various benchmark levels from MEP continuous records from Hamblin Pond and Quashnet River. ....	120
Table VII-4. Changes in eelgrass coverage in the Quashnet River, Hamblin Pond/Little River and Jehu Pond/Great River estuaries within the Waquoit Bay System of the Towns of Mashpee and Falmouth over the past half century (DEP, C. Costello). Values base upon data in Figure VII-8. ....	124
Table VII-5. Benthic infaunal community data (May 2003) for the Quashnet River, Hamblin Pond/Little River and Jehu Pond/Great River estuaries within the Waquoit Bay System. Estimates of the number of species adjusted to the number of individuals and diversity (H') and Evenness (E) of the community allow comparison between locations (Samples represent surface area of 0.0625 m2). ....	127
Table VIII-1. Summary of Nutrient Related Habitat Health for the Quashnet River, Hamblin Pond/Little River and Jehu Pond/Great River estuaries within the Waquoit Bay System, based upon assessment data presented in Chapter VII. ....	130

Table	Page
Table VIII-2. Comparison of sub-embayment watershed <b>septic loads</b> (attenuated) used for modeling of <b>Present Conditions</b> and <b>Scenarios A and B</b> loading to the Jehu Pond and Hamblin Pond Estuaries within the Waquoit Bay System. These loads do not include direct atmospheric deposition (onto the sub-embayment surface), benthic flux, runoff, or fertilizer loading terms.....	133
Table VIII-3. Comparison of sub-embayment attenuated <b>total watershed loads</b> (including septic, runoff, and fertilizer) used for modeling of <b>Present</b> and loading <b>Scenarios A and B</b> to the Jehu Pond and Hamblin Pond Estuaries within the Waquoit Bay System. These loads do not include direct atmospheric deposition (onto the sub-embayment surface) or benthic flux loading terms.....	133
Table VIII-4. Modeling <b>Scenarios A</b> sub-embayment and surface water loads used for total nitrogen modeling of the Jehu Pond and Hamblin Pond Estuaries within the Waquoit Bay System, with total watershed N loads, atmospheric N loads, and benthic flux. ....	134
Table VIII-5. Modeling <b>Scenario B</b> sub-embayment and surface water loads used for total nitrogen modeling of the Jehu Pond and Hamblin Pond Estuaries within the Waquoit Bay System, with total watershed N loads, atmospheric N loads, and benthic flux. ....	134
Table VIII-6. Modeled TN concentrations and percent change for present conditions and nitrogen loading <b>Scenarios A and B</b> , for the Jehu Pond and Hamblin Pond Estuaries within the Waquoit Bay System. Percent change represents the change in total N concentration.....	138
Table VIII-7. Comparison of sub-embayment watershed <b>septic loads</b> (attenuated) used for modeling of <b>Present Conditions</b> and modeling <b>Scenarios A and B</b> loading of the Quashnet River Estuary within the Waquoit Bay System. These loads do not include direct atmospheric deposition (onto the sub-embayment surface), benthic flux, runoff, or fertilizer loading terms. ....	139
Table VIII-8. Comparison of sub-embayment attenuated <b>total watershed loads</b> (including septic, runoff, and fertilizer) used for modeling of <b>Present</b> and modeling <b>Scenarios A and B</b> loading to the Quashnet River Estuary within the Waquoit Bay System. These loads do not include direct atmospheric deposition (onto the sub-embayment surface), benthic flux, runoff, or fertilizer loading terms.....	139
Table VIII-9. Modeling <b>Scenario A</b> sub-embayment and surface water loads used for total nitrogen modeling of the Quashnet River Estuary within the Waquoit Bay System, with total watershed N loads, atmospheric N loads, and benthic flux. ....	140
Table VIII-10. Modeling <b>Scenario B</b> sub-embayment and surface water loads used for total nitrogen modeling of the Quashnet River Estuary within the Waquoit Bay System, with total watershed N loads, atmospheric N loads, and benthic flux. ....	140
Table VIII-11. Modeled TN concentrations and percent change for present conditions and nitrogen loading <b>Scenarios A and B</b> , for the Quashnet River Estuary within the Waquoit Bay System.....	144